

# EzyStand - L

23"x21"x47"

58x53x160 cm

Rev. 20250615

Scale 1:1

## Step-by-step guide

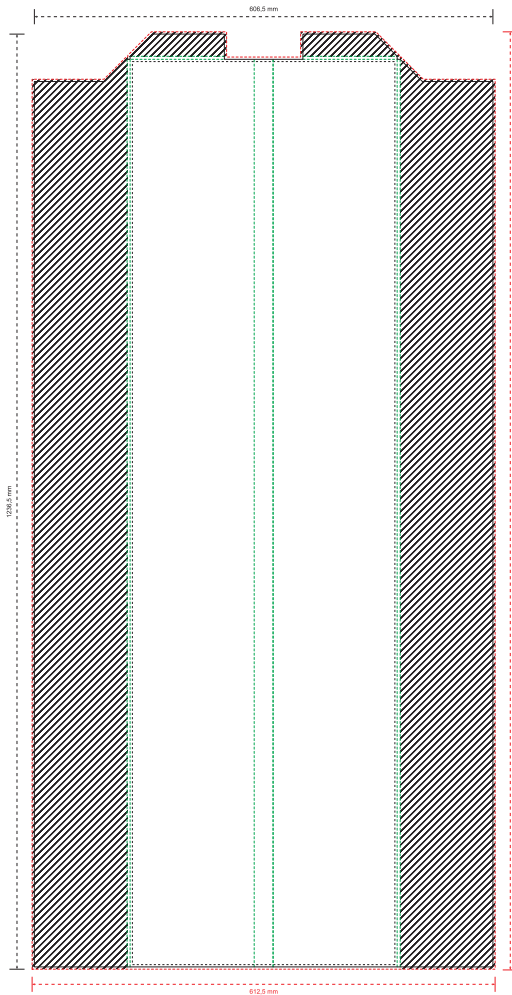
1. Keep the template size unchanged and place your final artwork in the "Design" layer.
2. When preparing your design, follow the guidelines shown in this document, including the bleed, cut line, safety margin and hidden margin.
3. Make sure all important text, logos, and key visual elements stay inside the recommended safety margin.
4. Extend the background and any full-size images to the bleed area to avoid unwanted white edges after production.
5. Save and submit the final file as a PDF, without crop marks or additional bleed.

## Legend

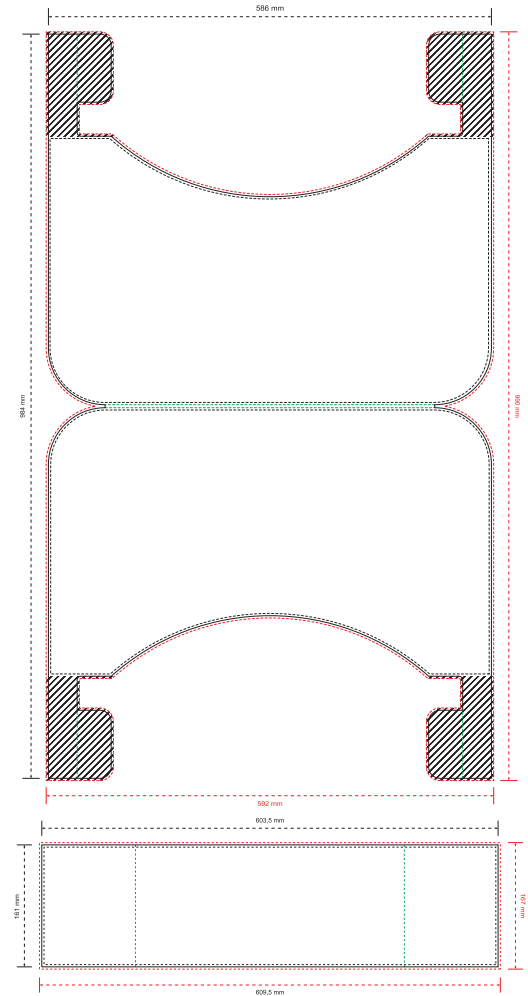
- Bleed / supplied artwork size.
- Finished size / cut line.
- - - Recommended safety margin.
- - - Fold line or crease line.

 Hidden / partially visible area

### Side



### Header



### Bottom